

# FEELING ADVENTUROUS? GET ACTIVE AND EXPLORE HARTLEPOOL



✓ WALK ✓ CYCLE ✓ DOG FRIENDLY

## ~ ROUTE 11 DETAILS ~

This is a leisurely circular route on pavement and coastal footpath, exploring the historic Hartlepool Headland.

## PLEASE REMEMBER TO :

### Respect Other People

Consider the local community and other people enjoying the outdoors, and leave gates and property as you find them. Follow paths unless wider access is available.

### Protect the Environment

Leave no trace of your visit, take your litter home, and keep dogs under effective control.

### Enjoy the Outdoors

Plan ahead and be prepared!  
Follow local signs and advice.



DISCOVER ALL OF OUR WALKING AND CYCLING GUIDES AT:

[www.explorehartlepool.com](http://www.explorehartlepool.com)

Explore Hartlepool



TEES VALLEY COMBINED AUTHORITY

TEES VALLEY MAYOR

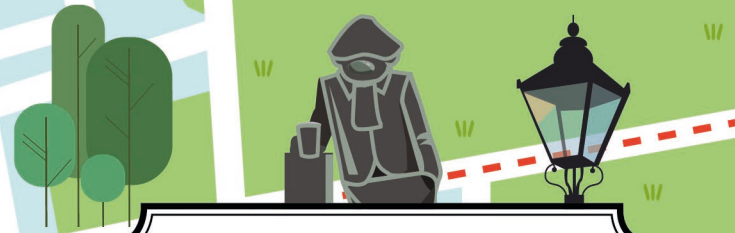
Map created by [www.abbyandowen.com](http://www.abbyandowen.com)

For further information on Public Rights of Way in Hartlepool, contact the Countryside Access team:

☎ 01429 523524

✉ [rightsofway@hartlepool.gov.uk](mailto:rightsofway@hartlepool.gov.uk)

Please ask us if you would like this leaflet in another language or format.



# HEADLAND WANDER

## ~ ROUTE 11 ~

- ▶ The Squirle
- ▶ St Hilda's Church
- ▶ Headland War Memorial
- ▶ Heugh Gun Battery



Approx:  
1.1 Miles

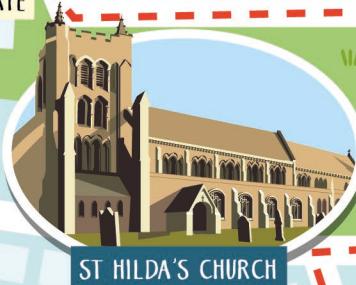








# HEADLAND WANDER

The historic Hartlepool Headland is a perfect day out for visitors with a taste for history and heritage. This circular route will take you on a tour of its heritage coastline, Saxon history and maritime past.

APPROX : 1.1 MILES



## CAN YOU SPOT (or photograph!)

-  x2 statues
-  A sitting seagull
-  x3 house colours
-  x3 bird species
-  Old water pump
-  Insect or web
-  Stained glass window

## REFRESHMENTS

Refreshments can be found dotted around The Headland.

## HEADLAND HUMOUR

Andy Capp is a beloved comic strip set in Hartlepool! Take a minute to reimagine a funny moment from today as a comic strip! What would it look like? Sketch it in your mind.

## HEADLAND HISTORY

As the site of a first settlement in the 7th Century, The Headland began the history of the town of Hartlepool. What signs of the Headlands origins can you discover?

